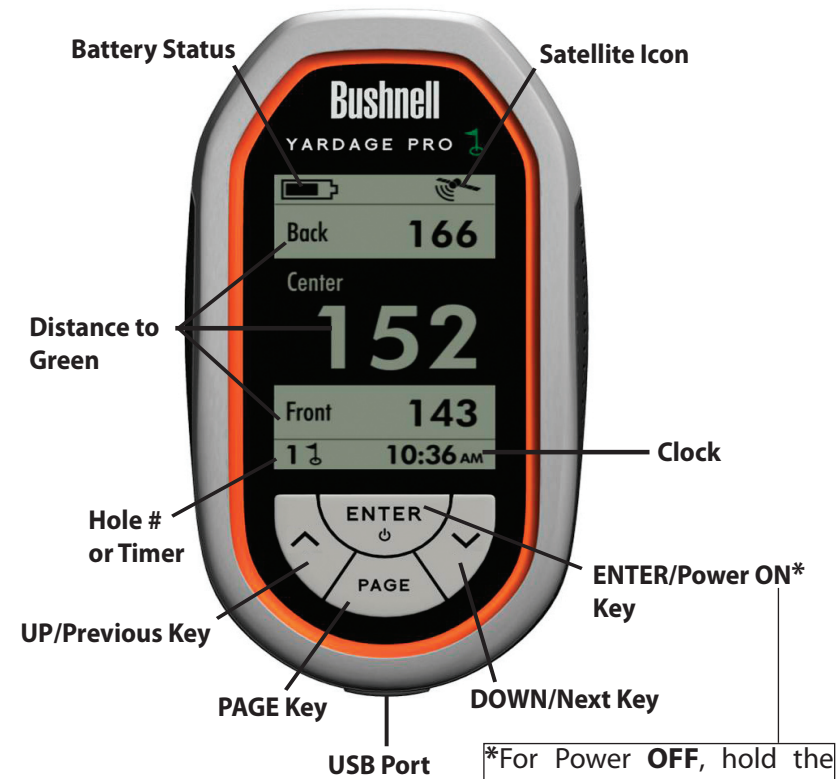


QuickStart Guide

Display and Control Layout

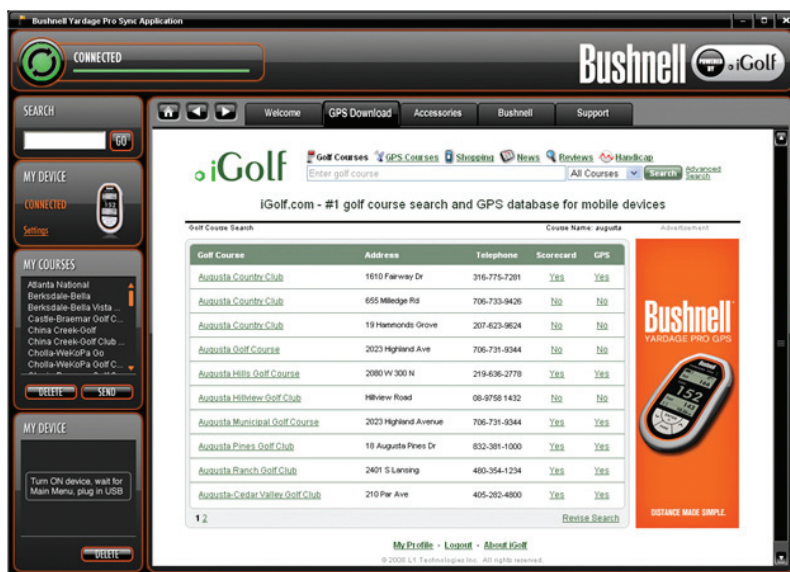


Sync App Installer Screen



*For Power OFF, hold the PAGE Key for 2 sec., select "Power Off", press ENTER.

Problems or Questions? Please contact Bushnell Customer Service via email or phone before returning your YP GPS unit to your dealer:
Call (800) 423-3537 or write to gpsinfo@bushnell.com



GPS Course File Download Screen

Bushnell®

YARDAGE PRO®

GPS

Quick Start Guide

Quick Start Guide

Step 1: Charge the battery via the supplied AC charger and USB cable, until the battery icon indicates a full charge (refer to the online instruction manual for details)

Step 2: Download, “UnZip” and Run the Software Installer (Do Not Connect The Yardage Pro GPS Unit Yet)

- Go to <http://www.bushnellgolf.com>. Click “GPS Rangefinders” (gray box), then “Yardage Pro”. Click the “SYNC APP” tab. Click the link to download the Installer for your computer platform (note: Power PC Macs are not fully supported, only Intel). Chose “Save” when the File Download window appears and select a save destination.
- When the download is complete, go to the “BushnellYardageProSyncInstaller.” zip folder (where you saved the download), and double click the folder to view its contents (or right click and choose an “Extract.” option) (1). Then double click the file named “Bushnell Yardage Pro Installer.exe” to open the main installation screen (2).
- You will need to install both a driver for the YP GPS hardware unit, and the Sync application that handles GPS data downloads and transfers.
- **Note: for more details/updates about downloading, installing and using the Sync applications, see the pdf guides under the “QUICK START” tab on the Yardage Pro webpage, as well as the tips/answers under the FAQ tab.**

Step 3: Install the USB Driver and Sync Application (Do Not Connect The Yardage Pro GPS Unit Yet)

- Click the **USB DRIVER SETUP** box and follow the onscreen directions to install the driver (3).
- Click **SYNC APPLICATION** and install it (don’t change the “Program Files\Bushnell” destination).
- When the installation is complete, you will have a Bushnell Yardage Pro Sync shortcut (golf flag icon) on your computer’s desktop.

Step 4: Start the Sync Application and Setup An iGolf Account (Do Not Connect The Yardage Pro GPS Unit Yet)

- Double click the Bushnell Yardage Pro Sync icon (golf flag) on your desktop to launch the Sync app (“Welcome” screen).
- Click the “GPS Download” tab. This will open a webpage where you will set up a membership to iGolf.com, which allows you to access their worldwide golf course database.
- Under “Join Now”, fill in your email, choose a password, and select a membership level. If you wish, you may start with a “free trial” membership which allows downloading one course, so you can try out your Yardage Pro before paying for a membership (required for full functionality) (4).
- Enter your contact information. You will also need to enter the serial number of your unit—hold **PAGE** to go to the main menu, arrow down to “SETTINGS”, press **ENTER**, then go down to “Unit Info” and press **ENTER**. (Note: if your unit does not display the serial number in the Unit Info menu, slide open the battery compartment and carefully lift aside the battery pack (do not disconnect it)- the serial number (“YP..”) is printed underneath).
- Click **Save** when you are done entering all required info.

Step 5: Download and Save GPS Data for Courses (Do Not Connect The Yardage Pro GPS Unit Yet)

- After setting up your iGolf membership (or logging in with your email+password), you will see your account profile page.
- To search for a golf course, click “GPS Courses” near the top of the screen. Next, enter the course name in the box at the top and click “SEARCH”.
- You also have an “Advanced Search” option -this will allow you to restrict the search by state, city or zip code, set search radius in miles, etc.
- In the Search results list, click the name of your course. On the Course Info screen, click “Download GPS & Scorecard”.
- Click **OK** to use one credit from your account. The course data will download (note the “DOWNLOADING: course name” progress bar on the top left of the Sync app window) and then appear under “My Courses” in the Sync application window.

Step 6: Send the Course Data from your Computer to Your Yardage Pro GPS Unit

- Hold down **ENTER** on your YP GPS unit for two seconds. Connect the supplied USB cable from your computer to the unit.
- The activity indicator at the top left of the Sync app window will confirm the unit is “CONNECTED”, then change to “READING DEVICE”, and the “My Device” frame will list any courses previously stored on your Yardage Pro.
- Select the name of the course under “My Courses” that you want to upload to the unit (or you may “drag and drop” a course from “My Courses” to “My Device”), and click the **SEND** button.
- The activity indicator changes to a “SENDING” progress bar, and the golf course name will appear in the “My Device” frame when the process is finished.
- Disconnect the YP GPS unit, then turn it off by selecting the “Power Off” option on the unit’s main menu and pressing **ENTER**.

Step 7: Head for the Links and Play Golf!

- Make sure you are in an open area, away from tall buildings and trees, for best reception of GPS satellite signals.
- Hold the **ENTER** key on the YP GPS unit for a few seconds to turn it on.
- Press the **DOWN** arrow key to highlight “Settings” on the display, then press **ENTER**. Highlight “Course Set”, then press **ENTER**.
- Use the **DOWN** or **UP** keys to select (highlight) the course name you want from the list of course data you downloaded or transferred to your YP GPS, then press **ENTER** again.
- Newer YP GPS units will automatically select the course for you based on your current GPS location.
- The unit will automatically power off after 30 minutes without user activity. This may be changed in the **Settings** menu if desired.

(1) WinZip® or similar file decompression utility is required to open (extract) .zip files. Free downloads are available on the internet if your PC does not already have a suitable program.

(2) If you get “Compressed (Zip) Folders” or “Unverified publisher” warning pop-ups, click Run.

(3) If you get a popup indicating the driver installer could not be launched, go to www.java.com to download & install the latest version of Java, then try again.

(4) Free trial course data expires after 45 days, and will not be usable after that time. Please upgrade your iGolf account to a regular paid membership.